

# Smith&Singer

Melbourne | +61 (0)3 9508 9900 | Thomas Austin | [Thomas.Austin@smithandsinger.com.au](mailto:Thomas.Austin@smithandsinger.com.au)

## CRESSIDA CAMPBELL

### Night Interior (2017)

#### — | MASTERPIECE | —

LARGEST SINGLE WORK EVER MADE BY CRESSIDA CAMPBELL TO LEAD SERIES OF INNOVATIVE SINGLE-LOT PRIVATE AUCTIONS CURATED BY SMITH & SINGER



CRESSIDA CAMPBELL born 1960  
**Night Interior** (2017)  
watercolour on incised woodblock,  
197 x 100 cm  
Estimate \$200,000–250,000  
© Cressida Campbell/Copyright Agency, 2020

# Smith&Singer

---

Melbourne | +61 (0)3 9508 9900 | Thomas Austin | [Thomas.Austin@smithandsinger.com.au](mailto:Thomas.Austin@smithandsinger.com.au)

*The Finest Example of Campbell's Internationally Acclaimed Distinctive Watercolours on Incised Woodblocks Ever Offered on the Secondary Market*

*'Night Interior' (2017) Poised to Eclipse the Previous Three Successive World Auction Records Established by Smith & Singer for the Artist*

**MELBOURNE, 17 April 2020** – The largest woodblock composition ever created by Australia's internationally-acclaimed artist, Cressida Campbell, will feature as the first in a series of innovative single-lot private auctions curated by Smith & Singer commencing on 5 May 2020. *Night Interior* (2017) is mesmerising in its reflective ambition and complex technical virtuosity and hails from Campbell's most revered series of domestic interior subjects. Available for viewing in Melbourne and Sydney by appointment only, this remarkable example is poised to eclipse the previous three successive world auction records achieved for Cressida Campbell by Smith & Singer in 2019.

## ***NIGHT INTERIOR (2017)***

How complete and wholly appropriate the objects of a Cressida Campbell painting are. The *intime* interior that is entirely Campbell's world yields a vast array of forms. *Night Interior* (2017) is a painting of deep personal and compositional reflection. The artist had thought about the painting as early as 2011 when she was in a period of 'meditative solace' (1) and would often lie on the sofa listening to music and contemplate the window's reflection. The repetition of spherical and other forms in the room became a fascinating compositional challenge but also an open question that the artist would in time resolve.

The image to the right, ornately framed, is a copy of a Matisse lithograph; the Chinese celadon bowl, with bat design, is clearly seen on the table, in both the reflection and the room, and accompanies other ceramics on shelves seen in long view. The paper lamps have a lightness and form that extends into the deeper space of the garden. The Chinese Regency chair is in many Campbell paintings and the ferns that extend into the space are an unconscious echo for the artist of grey ferns Campbell recently saw in a photograph of Matisse in his living room. The left side of the composition is severely cropped as evidenced by the descending picture frames and the final flutter of the patterned cloth. The vertical accent of the painting and the horizontal weather board capture this corner of the artist's world in what Campbell has described as a 'solitary moment.' (2)

# Smith&Singer

Melbourne | +61 (0)3 9508 9900 | Thomas Austin | [Thomas.Austin@smithandsinger.com.au](mailto:Thomas.Austin@smithandsinger.com.au)



*Cressida Campbell (2020)*, by Warren Macris, born 1959, © Warren Macris

## COMMERCIAL SUCCESS NOW REFLECTING LONG HELD CRITICAL ACCLAIM

Cressida Campbell has become one of Australia's most successful contemporary artists, with a strong following and a burgeoning international career – indeed, *Night Interior* (2017) was exhibited by Contemporary Fine Arts, Berlin, at Art Basel in Hong Kong. After championing Campbell's remarkable practice for several years, in 2019 the market began to reflect our long-held opinion of her work, when Smith & Singer became the first auction house to realise a price in excess of \$200,000 for Campbell, which it did twice during the *Important Australian Art* auction in April 2019. Both works by the artist in this momentous auction realised a new auction record, the highest of which – at \$256,200 – more than doubled the previous record of \$122,000. Just four months later, Smith & Singer, set the present record for Campbell with the sale of *Interior with Cat 2010* for \$292,800 (against an estimate of \$100,000–120,000).

To date, Smith & Singer has realised four of the five highest prices for Cressida Campbell at auction, including the previous three records, and we are honoured to offer *Night Interior* (2017) with the highest estimate to date for a work by the artist.

# Smith&Singer

Melbourne | +61 (0)3 9508 9900 | Thomas Austin | [Thomas.Austin@smithandsinger.com.au](mailto:Thomas.Austin@smithandsinger.com.au)



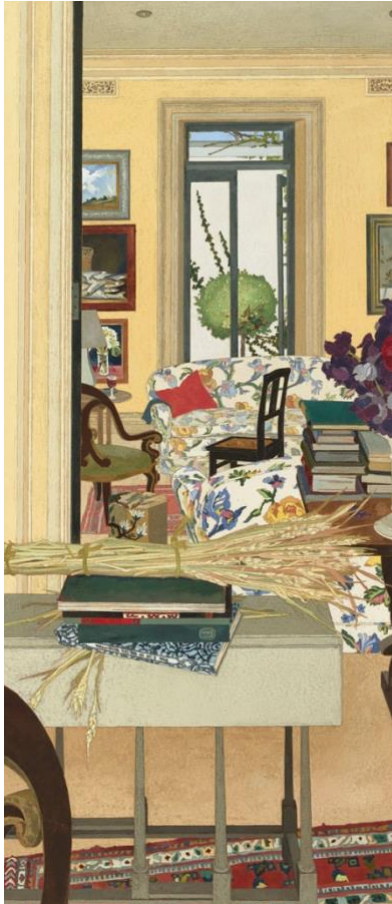
CRESSIDA CAMPBELL born 1960  
**Interior with Cat** 2010  
watercolour on incised woodblock,  
92 x 50 cm  
Estimate \$100,000–120,000  
Sold for \$292,800  
27 August 2019

AUCTION RECORD FOR THE ARTIST

© Cressida Campbell/Copyright Agency, 2020

# Smith&Singer

Melbourne | +61 (0)3 9508 9900 | Thomas Austin | [Thomas.Austin@smithandsinger.com.au](mailto:Thomas.Austin@smithandsinger.com.au)



CRESSIDA CAMPBELL  
born 1960  
**Interior with Wheat** (1996)  
watercolour on incised  
woodblock, 115 x 50 cm  
Estimate \$70,000–90,000  
Sold for \$256,200  
9 April 2019

SECOND-HIGHEST PRICE  
ACHIEVED AT AUCTION FOR  
THE ARTIST

© Cressida Campbell/Copyright Agency,  
2020



CRESSIDA CAMPBELL born 1960  
**Interior with Sunflowers and Figs** (1998)  
watercolour on incised woodblock, 100 x 100 cm  
Estimate \$80,000–120,000  
Sold for \$201,300  
9 April 2019

FOURTH-HIGHEST PRICE ACHIEVED AT AUCTION  
FOR THE ARTIST

© Cressida Campbell/Copyright Agency, 2020

# Smith&Singer

---

Melbourne | +61 (0)3 9508 9900 | Thomas Austin | [Thomas.Austin@smithandsinger.com.au](mailto:Thomas.Austin@smithandsinger.com.au)

*Geoffrey Smith, Chairman of Smith & Singer commented: 'This intimate rendering of Cressida Campbell's home is the most impressive and complex example ever offered on the secondary market. Highly personal and bearing the artist's distinctive focus on precise detail, it is also the first night setting to be offered at auction and presents a rare opportunity to acquire a masterpiece by one of Australia's foremost contemporary artists.'*

(1) Cressida Campbell, notes to the author, April 2020

(2) *ibid.*

## AT A GLANCE

CRESSIDA CAMPBELL born 1960

*Night Interior* (2017)

watercolour on incised woodblock, 197 x 100 cm

Estimate \$200,000–250,000

MASTERPIECE: Cressida Campbell, *Night Interior* (2017)

Estimate: \$200,000–250,000

Private Auction, 5 May 2020, 6.30 pm

**The health of our clients and our staff is paramount to Smith & Singer. As such, the exhibition of this work will be by private appointment only.**

**Viewings in Melbourne** from 20-26 April 2020

14-16 Collins Street, Melbourne

To arrange a viewing in Melbourne please call +61 (0)3 9508 9900

or email [Melbourne@smithandsinger.com.au](mailto:Melbourne@smithandsinger.com.au)

**Viewings in Sydney** from 29 April – 5 May 2020

30 Queen Street, Woollahra

To arrange a viewing in Sydney please call + +61 (0)2 9302 2402

or email [Sydney@smithandsinger.com.au](mailto:Sydney@smithandsinger.com.au)

# Smith&Singer

---

Melbourne | +61 (0)3 9508 9900 | Thomas Austin | [Thomas.Austin@smithandsinger.com.au](mailto:Thomas.Austin@smithandsinger.com.au)

FOR MORE NEWS FROM SMITH & SINGER

News: [www.smithandsinger.com.au/articles/press](http://www.smithandsinger.com.au/articles/press)

Twitter: [www.twitter.com/SmithandSinger](https://www.twitter.com/SmithandSinger)

Facebook: [www.facebook.com/smithandsinger](https://www.facebook.com/smithandsinger)

Attention: Copyright in the image(s) supplied shall remain vested in Smith & Singer. Please note that image(s) may depict subject matter which is itself protected by separate copyright. Smith & Singer makes no representations as to whether the underlying subject matter is subject to its own copyright, or as to who might hold such copyright. It is the borrower's responsibility to obtain any relevant permissions from the holder(s) of any applicable copyright and Smith & Singer supplies the image(s) expressly subject to this responsibility. Note that the image(s) provided is/are for a one-time use only and no permission is granted to alter the image(s) in any way.

Images are available upon request. All catalogues are available online at [smithandsinger.com.au](http://smithandsinger.com.au)