

Melbourne 8 July 2015

John Keats 03 9508 9900
John.Keats@sothebysaustralia.com.au

Rebecca Amos 03 8416 5999
RAmos@3dm.com.au

Fine Asian, Australian & European Arts & Design

Auction in Sydney 21 July 2015



A fine and rare ebony veneered striking bracket clock with pull quarter repeat, Henry Jones, London, circa 1685. Estimate \$35,000-45,000

Museum. Henry Jones was a celebrated maker of quality clocks and watches in London (estimate \$35,000-45,000, lot 259, pictured). The auction also includes fine examples of longcase, carriage and mantle clocks.

Providing a rare opportunity in Australia, collectors can acquire a large piece of silver by one of England's leading Royal silversmiths. A fine **sterling silver soup tureen by Paul Storr, London dated 1820** estimated at \$20,000-25,000 is a highlight of the sale (lot 335, pictured following). Storr's reputation rests on his mastery of the grandiose neo-Classical style developed in the Regency period. In addition the sale features a fine selection of English and European silver, including cutlery from Georg Jensen (estimate \$7,000-9,000, lot 317) and a rare George II/III silver teapot, sugar and creamer (estimate \$4,500-6,500, lot 333).

Following the success of the April 2014 sale of **Fine Asian, Australian & European Arts & Design** in Sydney, Sotheby's Australia returns on 21 July to auction a remarkable selection of fine Australian & European art, furniture and silver, together with Asian ceramics, jade and furniture at the InterContinental Sydney. Including property from the Minter Ellison Collection, Sydney, the auction of 335 carefully selected and curated items in the sale are estimated at \$1.1 to \$1.6 million. The exhibition from 16-21 July will be over three premises at 30, 34 & 38 Queen Street, Woollahra.

A very rare and important **ebony veneered striking bracket clock by Henry Jones**, is a fine inclusion in the auction. Keeping time for over 300 years (dated circa 1685), a similar example is housed in the British

Le Pho (1907-2001) a Vietnamese painter, was awarded a scholarship and trained at the École des Beaux-Arts in Paris. He painted sceneries of Vietnam, still life with flowers, family settings and portraits. Vietnamese women, most often portrayed as elongated figures evoking the influence of impressionism and surrealism, were a recurrent theme in his work. (*Devant la Fenetre*) featuring a woman seated in a contemplative posture at a table with child looking up at her is a fine example of Le Pho's work (estimate \$20,000-30,000, lot 94, pictured).



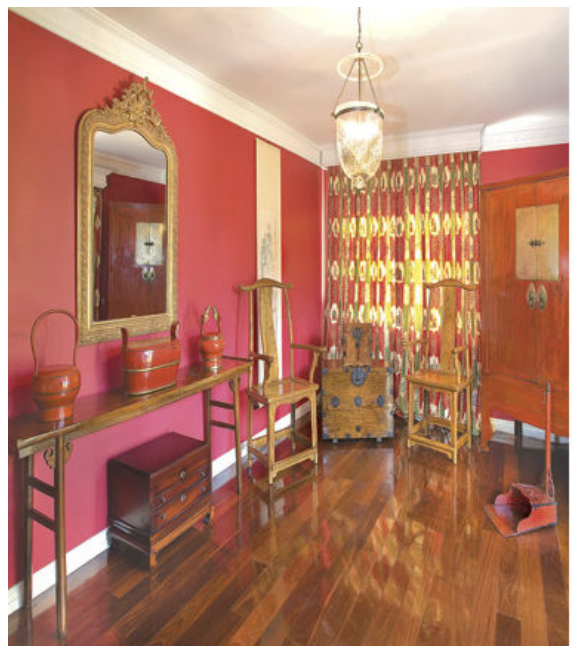
A fine sterling silver soup tureen and cover, Paul Storr, London, 1820. Estimate \$20,000-30,000

The Asian section includes two Sydney private collections; ceramics, jades, furniture and paintings from the **Estate of the Late Mrs Peggy Kwan**, and furniture & paintings from the **Collection of Mr Arthur Winckler**. Peggy Kwan shared associations with Chinese artists, and, with her husband hosted Guan Shanyue and Li Xiongcai when they were included in the Art Gallery of New South Wales exhibition *Two Chinese Modern Masters* in 1985. Arthur Winckler commenced collecting Asian furniture and paintings when he resided in Hong Kong in the 1990s. Furniture from his collection includes a **jumu recessed leg table**, **Qiaotouan, Qing dynasty** (estimate \$4,000-5,000, lot 165) and a **huanghuali table top chest**, **Guanpixiang, Qing dynasty** (estimate \$6,000-8,000, lot 174).



LE PHO 1907-2001, (*Devant La Fenetre*). Estimate \$20,000-30,000

Geoffrey Smith, Chairman of Sotheby's Australia commented: 'Sotheby's Australia maintains its commitment to sourcing and offering the finest examples of Arts & Design by historical, modern, and contemporary practitioners from around the world.'



A selection of property from the Collection of Mr Arthur Winckler, Sydney

AT A GLANCE

Fine Asian, Australian & European Arts & Design

Including Property from the Minter Ellison Collection, Sydney

Auction at InterContinental Sydney, 117 Macquarie Street, Sydney, 21 July 2015, 6 pm

Total lots 335 | Total estimate \$1,119,200 to \$1,621,900

Exhibition in Sydney, 30, 34 & 38 Queen Street, Woollahra, 16-21 July, 10 am to 5 pm

For More News on Sotheby's Australia

VISIT sothebysaustralia.com.au/articles/press

FOLLOW twitter.com/sothebysAUST

JOIN facebook.com/sothebysaustralia

**Estimates do not include buyer's premium and prices achieved include the hammer price plus buyer's premium.*

Images are available upon request

All catalogues are available online at sothebysaustralia.com.au