

Melbourne 14 August 2014

John Keats 03 9508 9900
John.Keats@sothebysaustralia.com.au

Sarah Carroll 03 8416 5999
SCarroll@3dm.com.au

Important Australian & International Art Sydney 26 August 2014

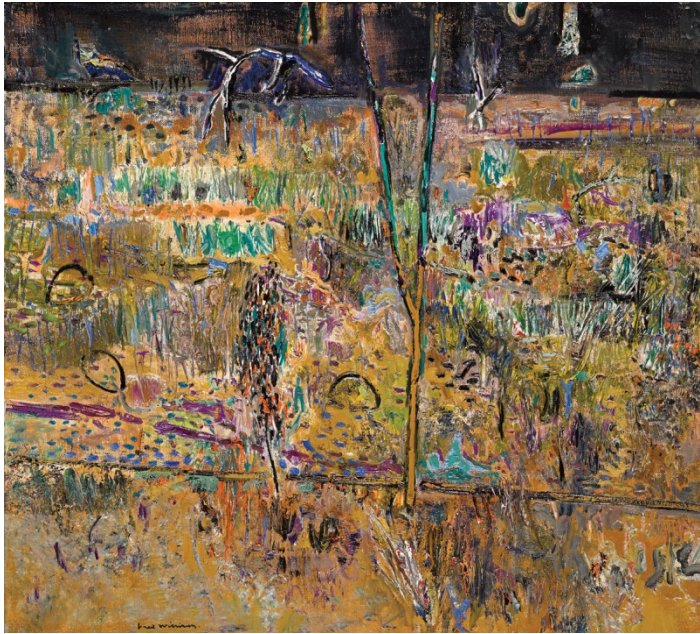


Russell Drysdale 1912-1981, *The Barmaid, Broome* 1965. Estimate \$400,000-600,000

An exceptional selection of Important Australian & International Art from colonial through to contemporary will be offered for sale by Sotheby's Australia on 26 August 2014 in Sydney. The sale features 95 lots with a combined pre-sale estimate of \$5.5 million to \$7.4 million. Re-affirming strength in the market and vendor confidence in selling with Sotheby's Australia, many rare and significant works have appeared for auction for the first time in decades, with important examples repatriated from overseas.

1 | Sotheby's Australia is a trade mark used under licence from Sotheby's. Second East Auction Holdings Pty Ltd is independent of the Sotheby's Group. The Sotheby's Group is not responsible for the acts or omissions of Second East Auction Holdings Pty Ltd

Sotheby's Australia is honoured to be entrusted with 23 paintings, sculptures and works on paper from one of Australia's most distinguished private collections, assembled during the past 50 years and featuring superb works by Arthur Boyd, Russell Drysdale, Rosalie Gascoigne, John Perceval, Brett Whiteley and Fred Williams. A highlight is Russell Drysdale's *The Barmaid, Broome* 1965 (estimate \$400,000-600,000, lot 10, pictured previous) that had its origins in the artist's four months of travel across Western Australia's central desert and Kimberley regions in late 1958. The painting featured on the cover of the artist's solo exhibition at the Leicester Galleries in London in 1965 and has remained one of Drysdale's most indelible images.



Fred Williams 1927-1981, *Forked Tree, Kew Billabong* (1975).
Estimate \$300,000-400,000

Jeffrey Smart features prominently in the sale with four exceptional paintings that provide a unique insight into the artist's oeuvre over 40 years, commencing with *San Cataldo I* 1964 (estimate \$220,000-280,000, lot 27) and culminating in *The Red Warehouse* (2003) (estimate \$400,000-600,000, lot 35). Fred Williams' mesmerising and lyrical *Forked Tree, Kew Billabong* (1975) (estimate \$300,000-400,000, lot 33) is one of three major paintings by the artist in the sale.

For literary aficionados, Sotheby's Australia is delighted to have consigned Sidney Nolan's *Ape* (1963) (estimate \$40,000-60,000, lot 83), acquired by the celebrated author Ian Fleming from its initial exhibition in London. Fleming's tenth James Bond novel *On Her Majesty's Secret Service* had been released on 1 April 1963, just a few weeks prior to Nolan's show; with 60,000 copies of the book sold in the month following publication, he could certainly have justified the mild extravagance of a painting purchase.

Sculptural works feature prominently in the sale and include a private collection of twelve sculptures (lots 84-95) by Australian-American artist Clement Meadmore (1929-2005). Meadmore first established his career as an artist in Sydney and Melbourne, but moved to New York in 1963 where his style was heavily influenced by the modern art movements of post-war America. A distinct minimalist approach can be seen in the collection being offered for sale, which includes smaller bronze pieces dating from 1961 to 1997.

'Following the enormous success of our May auction we are delighted to present this impressive collection of Important Australian & International Art for auction in August,' says Geoffrey Smith, Chairman of Sotheby's Australia. 'The sale offers collectors a remarkable opportunity to engage with and acquire works of exceptional quality that have remained hidden from public view for many decades.'

AT A GLANCE

Important Australian & International Art
Auction in Sydney, 26 August 2014, 6.30 pm
InterContinental Sydney, Fort Macquarie Room
117 Macquarie Street, Sydney

Exhibition in Melbourne
14-17 August, 10 am to 5 pm
Level 9, 41 Exhibition Street, Melbourne

Exhibition in Sydney
21-26 August, 10 am to 5 pm
30 Queen Street, Woollahra, Sydney

For More News on Sotheby's Australia

VISIT sothebysaustralia.com.au/articles/press

FOLLOW twitter.com/sothebysAUST

JOIN facebook.com/sothebysaustralia

**Estimates do not include buyer's premium and prices achieved include the hammer price plus buyer's premium.*

Images are available upon request

All catalogues are available online at sothebysaustralia.com.au